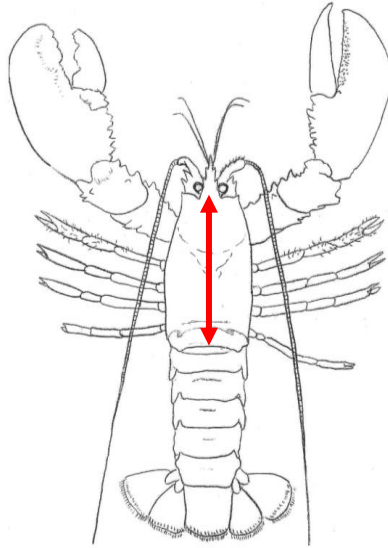


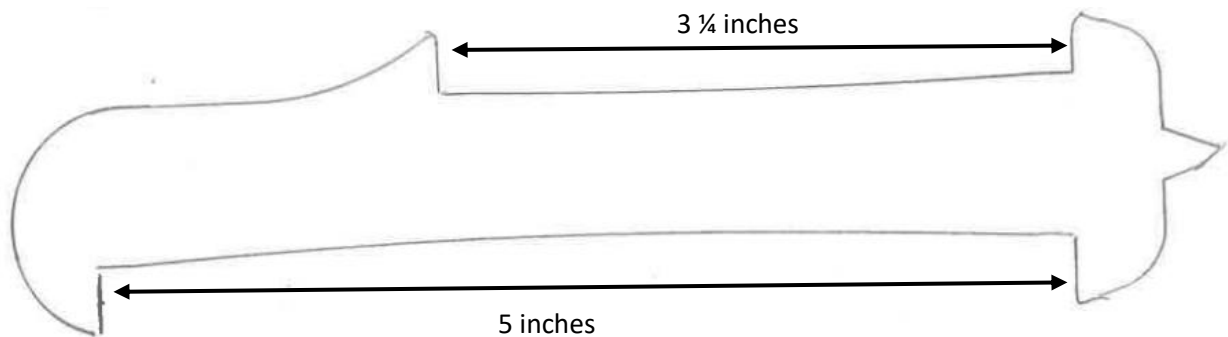
Measuring Lobsters

New England Lobstermen have to measure the lobsters that they catch in order to be within legal size limits. Lobstermen work with scientists to help determine the appropriate sizes of lobster to catch to ensure they are neither too small nor too big so that we can sustain a healthy population in the ocean. In New England the regulation is that the lobster's carapace is bigger than $3\frac{1}{4}$ inches and smaller than 5 inches. The tool they use to measure the lobsters are called **Lobster gauges**.



The lobster gauge is used to measure the area shown here called the Carapace (behind the eye to the start of the tail) making sure it is bigger than $3\frac{1}{4}$ inches and smaller than 5 inches.

Your first task is to create your own life size lobster gauge using the measurements as shown in the drawing below. Be creative and use materials you have around your house to create your own measuring tool.



Once you have created your measuring tool, go around your house find items that are within the legal size limit of the lobsters carapace ($3\frac{1}{4}$ inches – 5 inches). See how many items you can find!