

Corporate Appreciation Night

July 31, 2019
5:30 p.m. – 9:00 p.m.



Evening's Events

5:30 p.m.

Event registration and reception

Simons IMAX® Theatre

6:00 p.m.

Welcome by Vikki N. Spruill, President and CEO, New England Aquarium; remarks by Community Engagement teen intern Alisha Patel of Littleton; followed by a special screening of *Turtle Odyssey*

Simons IMAX® Theatre

7:00 p.m. – 9:00 p.m.

Enjoy a **strolling dinner** as you explore the Aquarium exhibits.

All levels

Special Programs

7:30 p.m.

Visit our lively and playful **sea lions and fur seals** as our trainers explain what it takes to care for these amazing animals.

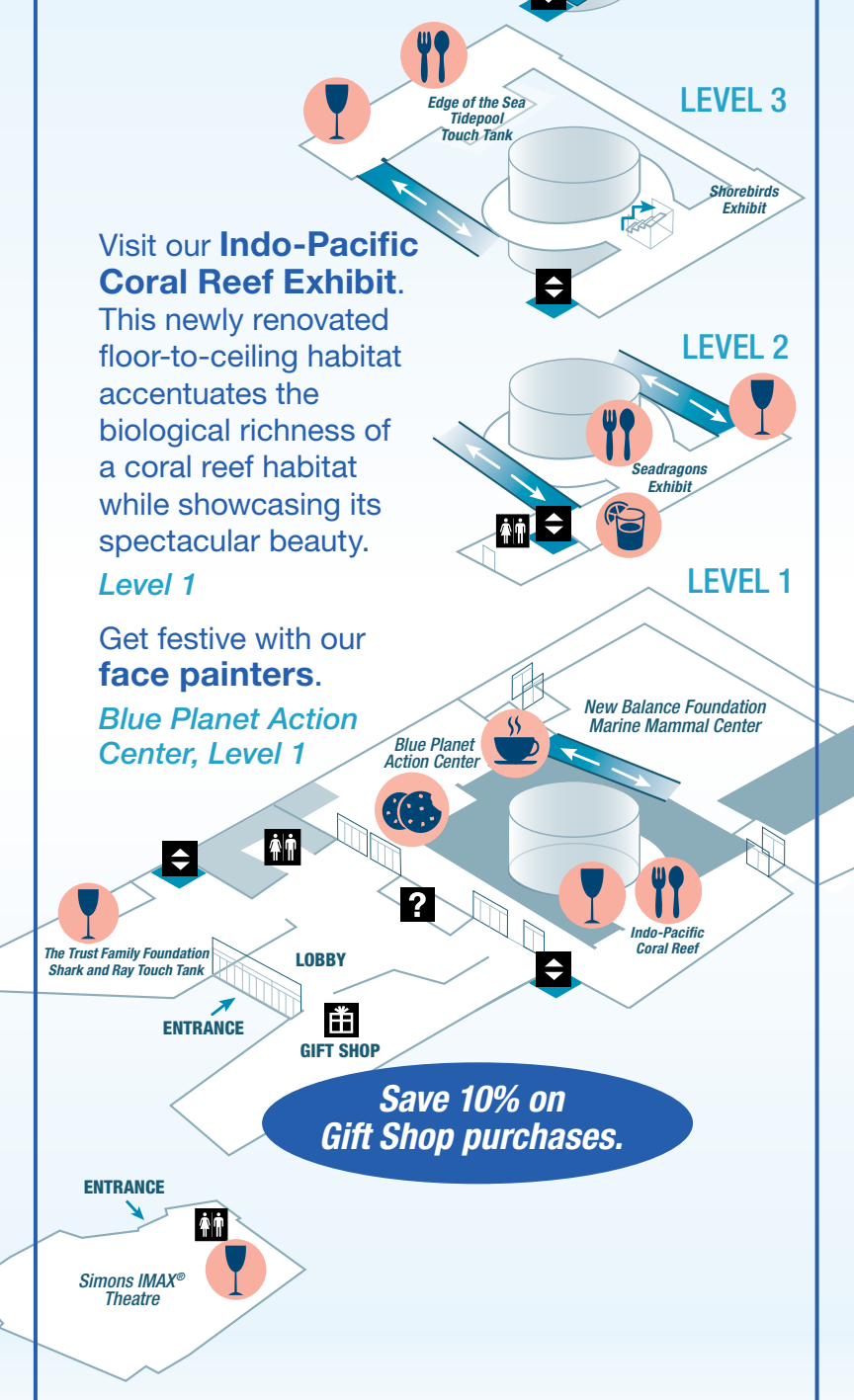
New Balance Foundation

Marine Mammal Center

8:15 p.m.

Be whisked away to a **Caribbean coral reef** as you hear from our **Education and Dive staff** about the jewel of the Aquarium —the Giant Ocean Tank. This 200,000-gallon exhibit features more than 800 different animals, including our most famous, **Myrtle the green sea turtle**. Be sure to stop by and say hi to the Queen of the Giant Ocean Tank!

Top of the Giant Ocean Tank, Level 4



Strolling Dinner Menu



Summer Picnic

Levels 1, 2, 3

Popcorn buttermilk fried chicken, slow-cooked BBQ beef brisket, traditional southern potato salad, house-made buttermilk biscuits, and macaroni and cheese

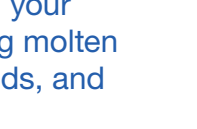
Caprese Carving and Salt Bar

Levels 1, 2, 3

Vine-ripened gazpacho, heirloom tomato salad with fresh mozzarella, basil bruschetta, Caesar salad, and pesto crostini with roma tomato jam

Beverages

Dessert Station with Coffee and Tea



Level 1

A selection of house-baked cookies and brownies for you to customize with your favorite summer toppings, including molten chocolate, toasted coconut, almonds, and peanut butter sauce

Bars

Levels 1, 2, 3, and Trust Family Foundation Shark and Ray Touch Tank



Wine, beer, and our signature cocktail



Lemonade and Water

Level 2

The New England Aquarium is proud to recognize its lead corporate sponsors:



50
YEARS AND COUNTING

New England Aquarium



PROTECTING THE BLUE PLANET